

Lab

The Home Lab: Pictures of an Analog World

There is no doubt: The real world is analog. We understand „analog“ as the complement to „digital“. Everything that surrounds us – light, materials, sounds – we perceive as an analog presentation, as a continuous, i.e. a continuously changing „signal“.

The decision, whether you will make images of our real world as analog or digital „signals“, that is to say shoot analog or digital pictures, is of basic fundamental importance. The same applies to the further processing of the analog or digital image. Even though shooting digital or analog as a procedure is almost the same, the home lab as the place for analog processing is a completely different world.

Digital processing requires knowledge about computers and software for processing digital images.

On the other hand working in a home lab needs handicraft skills and requires practical as well as specific knowledge. The enjoyment for handicraft work is the most important motivation for „making pictures“ in your own home-lab. In some way the results of this work can be seen as pieces of art. Take into consideration, that the home lab worker uses the same materials as the professional, then he could produce professional results, something you normally have to spend big money for.

Working in an own home lab is also very often a pleasing compensation for your professional work, nowadays done very often in front of a computer monitor. There are many people who do not like to continue that in their free time.

There are even more reasons to do your own processing, printing and enlarging. Your home lab offers invaluable advantages when you make enlargements bigger than 30 x 40 cm or 12 x 16“. At these scales you can clearly recognize another property of the analog image recording procedure: the continuous tone increase from the deepest shadows to the brightest highlights.



The pictures produced in a home lab are also very durable. Especially black-and-white pictures printed on baryta paper can reach an age of more than 100 years if they are properly processed and stored. Viewing these images requires no additional tools, even the human eye is an analog sensor.

For approximately comparable quality with large format prints professional wide-format inkjet printers are required. Comparable life time can only be achieved by using pigment based inks in connection with archive durable inkjet papers. To get a color rendition in as much detail as possible or many gray tones bet-

ween deep black and bright white your printer needs 10 to 12 color, black and gray inks – copy costs for one print are correspondingly high.

The craftsman in his home lab needs suitable and reliable tools for his „picture workshop“. The core piece is the enlarger, an appliance which does the exposure by projecting the film image on the photographic paper. Kaiser offers a flexible and well-engineered enlarger system and every „image craftsman“ can make an adequate and reasonable choice – analog after all (Greek: „ana“ = according to + „logos“ = reason).



Photographie: Carlo Lecuit

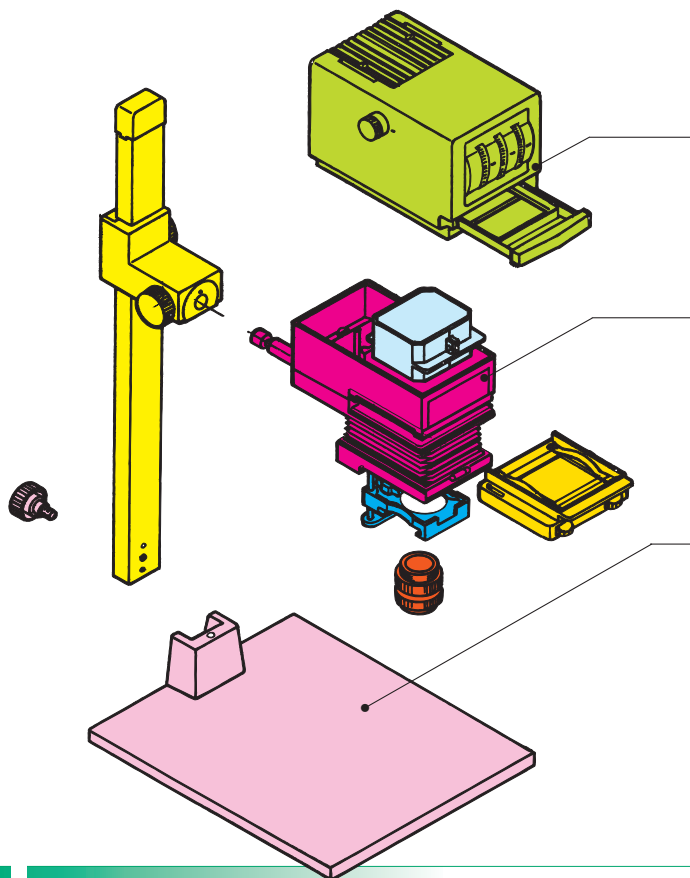


Photographie: Ivana Grujić

SYSTEM-V: A Concept with a System

The Kaiser SYSTEM-V is the consistent implementation of the modular concept to an entire range of enlargers. It is not only characterized by the upgradability to different lighting heads and formats, all the items in the system are compatible with all the units. The complete modularisation of the enlarger

is the unmistakable feature of SYSTEM-V. It also permits an enlarger to be assembled from the various system modules to completely suit your individual needs. So you can get a model out of the box or have one tailor-made for you as well.



The hardware side of the SYSTEM-V concept is based on three separate assemblies.

1. The lighting components

The „heads“ determine the type of light and beam, the filtration and light mixing features. They decide whether the complete machine is a color or black-and-white enlarger.

2. The format-determinative components

„Format“ is defined here as the maximum enlargeable negative format. These components include the condenser system, the inserts for the compound negative carrier, and the enlarger lens. They decide whether the machine is a 35 mm enlarger or a medium-format one for 6 x 6 cm, 6 x 7 cm or 6 x 9 cm.

3. The dimension-determinative components

These include the base board and column and their dimensions – The width times the depth and column height determine the overall machine sizes.

Everything under Control

| | Type | Code no. | Negative format | | | | Focusing Enlarging | | | | Specials | Negative carrier | | Enlarger head | | | | | | | | | | Lighting | | Base board | | | | | | | | | | |
|-----------------|----------|----------|-----------------------------|-----------------------------|-----------------------------|----------------------------|---------------------------|---------------|---------------------------------------|---------------------------------|----------|-----------------------|--|---------------------------|-----------------|--------------------------|-----------------------------|---------------------------|----------------------------------|-------------------------------------|--------------------------|-------------------------------------|------------------|----------------------------|--------------------------------|------------|------------------------------|---------------|------------------------|---|---------------------------|---------------------------|---|---|---|---|
| | | | up to 6 x 9 cm (2.4 x 3.5") | up to 6 x 7 cm (2.4 x 2.8") | up to 6 x 6 cm (2.4 x 2.4") | up to 24 x 36 mm (35 mill) | wall and floor projection | scale display | height adjustment with friction drive | weight balance with roll spring | | focus with fine drive | max. enlargement (linear) on baseboard | Scheimpflug rectification | interchangeable | mask/glass insert top 2) | mask/glass insert bottom 2) | adjustable masking strips | color head with dichroic filters | filter values, densitometric to 180 | scale wheels illuminated | white-light lever/density diaphragm | double condensor | filter drawer/spirit level | diffuser, UV filter, IR filter | red filter | quick-change lens attachment | filter holder | direct, 75 W opal lamp | reflex, 100 W cold light mirror lamp 3) | 50 x 60 cm (19.5 x 23.5") | 45 x 50 cm (17.5 x 19.5") | | | | |
| Color enlargers | VCP 9005 | 4550 | ● | | | | ● | ● | ● | ● | ● | 6.0 | ● | ● | AN | P | ● | ● | ● | ● | ● | ● | ● | ● | ● | ● | ● | ● | ● | ● | ● | ● | ● | ● | ● | |
| | VCP 7005 | 4480 | | ● | | | ● | ● | ● | ● | ● | 7.2 | ● | ● | AN | M | ● | ● | ● | ● | ● | ● | ● | ● | ● | ● | ● | ● | ● | ● | ● | ● | ● | ● | ● | |
| | VCP 6005 | 4460 | | | ● | | ● | ● | ● | ● | ● | 8.4 | ● | ● | AN | M | ● | ● | ● | ● | ● | ● | ● | ● | ● | ● | ● | ● | ● | ● | ● | ● | ● | ● | ● | |
| | VCP 3505 | 4420 | | | | ● | ● | ● | ● | ● | ● | 14.6 | ● | ● | M | M | ● | ● | ● | ● | ● | ● | ● | ● | ● | ● | ● | ● | ● | ● | ● | ● | ● | ● | ● | |
| Multigrade® | VPM 9005 | 4560 | ● | | | | ● | ● | ● | ● | ● | 6.0 | ● | ● | AN | P | ● | 1) | 1) | ● | ● | ● | ● | ● | ● | ● | ● | ● | ● | ● | ● | ● | ● | ● | ● | |
| | VPM 7005 | 4471 | | ● | | | ● | ● | ● | ● | ● | 7.2 | ● | ● | AN | M | ● | 1) | 1) | ● | ● | ● | ● | ● | ● | ● | ● | ● | ● | ● | ● | ● | ● | ● | ● | ● |
| | VPM 6005 | 4530 | | | ● | | ● | ● | ● | ● | ● | 8.4 | ● | ● | AN | M | ● | 1) | 1) | ● | ● | ● | ● | ● | ● | ● | ● | ● | ● | ● | ● | ● | ● | ● | ● | ● |
| | VPM 3505 | 4426 | | | | ● | ● | ● | ● | ● | ● | 14.6 | ● | ● | M | M | ● | 1) | 1) | ● | ● | ● | ● | ● | ● | ● | ● | ● | ● | ● | ● | ● | ● | ● | ● | ● |
| B&W enlargers | VP 9005 | 4540 | ● | | | | ● | ● | ● | ● | ● | 6.0 | ● | ● | AN | P | ● | | | | | | | | | | | | | | | | | | | |
| | VP 7005 | 4470 | | ● | | | ● | ● | ● | ● | ● | 7.2 | ● | ● | AN | M | ● | | | | | | | | | | | | | | | | | | | |
| | VP 6005 | 4465 | | | ● | | ● | ● | ● | ● | ● | 8.4 | ● | ● | AN | M | ● | | | | | | | | | | | | | | | | | | | |
| | VP 3505 | 4425 | | | | ● | ● | ● | ● | ● | ● | 14.6 | ● | ● | AN | M | ● | | | | | | | | | | | | | | | | | | | |

1) Multigrade head 2) AN = Anti-Newton-glass, M = mask, P = flat glass 3) Transformer required



4450/4480

Color Enlargers SYSTEM-V

General specifications:

Color mixing head with dichroic interference filters, calibrated in densitometric values up to 180. Dials are indirectly illuminated. White-light lever for simultaneous swinging in or out of filters, with control light. Continuously adjustable density aperture up to 60 densitometric densities (= two aperture settings). Best possible light distribution due to special diffusor plate and exchangeable double condenser system. UV and IR filters. Filter drawer.

Removable compound negative carrier with interchangeable inserts, adjustable masking strips, adjustable film stops and grid pins. Lens stage with spirit level and red filter, tilt-able for distortion correction on Scheimpflug principle. Quick change attachment for lenses. Height adjustment by hand-crank operated friction drive on plastic bearings. Wall and floor projection possible.

Wide, vibration-resistant column of embossed aluminium tubing, with dull black anodized surface, cm and inch scales and markings for enlarging scales. Matt-gray laminated base board with individually height-adjustable feet. Spirit level on column base.

Technical specifications:

Lamp: Halogen cold light mirror lamp,
12 V, 100 W, socket GZ 6.35

Cord: approx. 1.80 m (6 ft.)

Filter drawer: 85 x 85 mm (3.3 x 3.3 in.)

Column (HxWxD): approx. 1000 x 70 x 35 mm
(39.4 x 2.8 x 1.4 in.)

Distance between optical axis and column
base: approx. 220 mm (8.7 in.).

Can be converted into a copy stand or a
slide duplicator.

Scope of supply: Incl. compound negative
carrier, lamp and dust hood, without lens,
without transformer.



4459

4550
VCP 9005

Color enlarger for all film formats up to 6 x 9 cm (2.4 x 3.5 in.) and lenses up to 105 mm focal length.

Compound negative carrier fitted with Anti-Newton glass on top and flat glass on bottom.

Focusing with additional fine drive. Height adjustment with weight compensation by a roll-off spring mechanism.

Filter holder for square filters and framed Multigrade® filters, can be swung out and adjusted in height, with diffusor plate for integral metering.

Base board (WxDxH): approx. 600 x 500 x 32 mm (23.6 x 19.7 x 1.3 in.)

4480
VCP 7005

Color enlarger for all film formats up to 6 x 7 cm (2.4 x 2.8 in.) and lenses up to 105 mm focal length. Can be converted to a 6 x 9 enlarger.

Compound negative carrier fitted with Anti-Newton glass on top and 6 x 7 format mask on bottom.

Focusing with additional fine drive. Height adjustment with weight compensation by a roll-off spring mechanism.

Filter holder for square filters and framed Multigrade® filters, can be swung out and adjusted in height, with diffusor plate for integral metering.

Base board (WxDxH): approx. 600 x 500 x 32 mm (23.6 x 19.7 x 1.3 in.)

4460
VCP 6005

Color enlarger for all film formats up to 6 x 6 cm (2.4 x 2.4 in.) and lenses up to 80 mm focal length. Can be converted to formats up to 6 x 9 cm.

Compound negative carrier fitted with Anti-Newton glass on top and 6 x 6 format mask on bottom.

Base board (WxDxH): approx. 450 x 500 x 28 mm (17.7 x 19.7 x 1.1 in.)

4420
VCP 3505

Color enlarger for 35 film (24 x 36 mm) and lenses up to 50 mm focal length. Can be converted to formats up to 6 x 9 cm.

Compound negative carrier fitted with 35 mm (24 x 36 mm) format masks.

Base board (WxDxH): approx. 450 x 500 x 28 mm (17.7 x 19.7 x 1.1 in.)





4560/4471

Multigrade® Enlargers SYSTEM-V

General specifications:

Multigrade® head with dichroic color filter for use with variable gradation paper without changing the exposure time. Scale dial indirectly illuminated with index numbers in half steps from 0 (extra soft) to 5 (extra hard) for stepless contrast control. White-light lever for simultaneous swinging in or out of filters, with control light. Continuously adjustable density aperture up to 60 densitometric densities (= two aperture settings). Best possible light distribution due to special diffusor plate and exchangeable double condensor system. UV and IR filters. Filter drawer.

Removable compound negative carrier with interchangeable inserts, adjustable masking strips, adjustable film stops and grid pins. Lens stage with spirit level and red filter, tilt-able for distortion correction on Scheimpflug principle. Quick change attachment for lenses. Height adjustment by hand-crank operated friction drive on plastic bearings. Wall and floor projection possible.

Wide, vibration-resistant column of embossed aluminium tubing, with dull black anodized surface, cm and inch scales and markings for enlarging scales. Matt-gray laminated base board with individually height-adjustable feet. Spirit level on column base.

Technical specifications:

Lamp: Halogen cold light mirror lamp, 12 V, 100 W, socket GZ 6.35
 Cord: approx. 1.80 m (6 ft.)
 Filter drawer: 85 x 85 mm (3.3 x 3.3 in.)
 Column (HxWxD): approx. 1000 x 70 x 35 mm (39.4 x 2.8 x 1.4 in.)
 Distance between optical axis and column base: approx. 220 mm (8.7 in.)

Can be converted into a copy stand.

Scope of supply: Incl. compound negative carrier, lamp and dust hood, without lens, without transformer.



4459

4560
VPM 9005

Multigrade® enlarger for all film formats up to 6 x 9 cm (2.4 x 3.5 in.) and lenses up to 105 mm focal length.

Compound negative carrier fitted with Anti-Newton glass on top and flat glass on bottom.

Focusing with additional fine drive. Height adjustment with weight compensation by a roll-off spring mechanism.

Filter holder for square filters and framed Multigrade® filters, can be swung out and adjusted in height, with diffusor plate for integral metering.

Base board (WxDxH): approx. 600 x 500 x 32 mm (23.6 x 19.7 x 1.3 in.)

4471
VPM 7005

Multigrade® enlarger for all film formats up to 6 x 7 cm (2.4 x 2.8 in.) and lenses up to 105 mm focal length. Can be converted to a 6 x 9 enlarger.

Compound negative carrier fitted with Anti-Newton glass on top and 6 x 7 format mask on bottom.

Focusing with additional fine drive. Height adjustment with weight compensation by a roll-off spring mechanism.

Filter holder for square filters and framed Multigrade® filters, can be swung out and adjusted in height, with diffusor plate for integral metering.

Base board (WxDxH): approx. 600 x 500 x 32 mm (23.6 x 19.7 x 1.3 in.)

4530
VPM 6005

Multigrade® enlarger for all film formats up to 6 x 6 cm (2.4 x 2.4 in.) and lenses up to 80 mm focal length. Can be converted to formats up to 6 x 9 cm.

Compound negative carrier fitted with Anti-Newton glass on top and 6 x 6 format mask on bottom.

Base board (WxDxH): approx. 450 x 500 x 28 mm (17.7 x 19.7 x 1.1 in.)

4426
VPM 3505

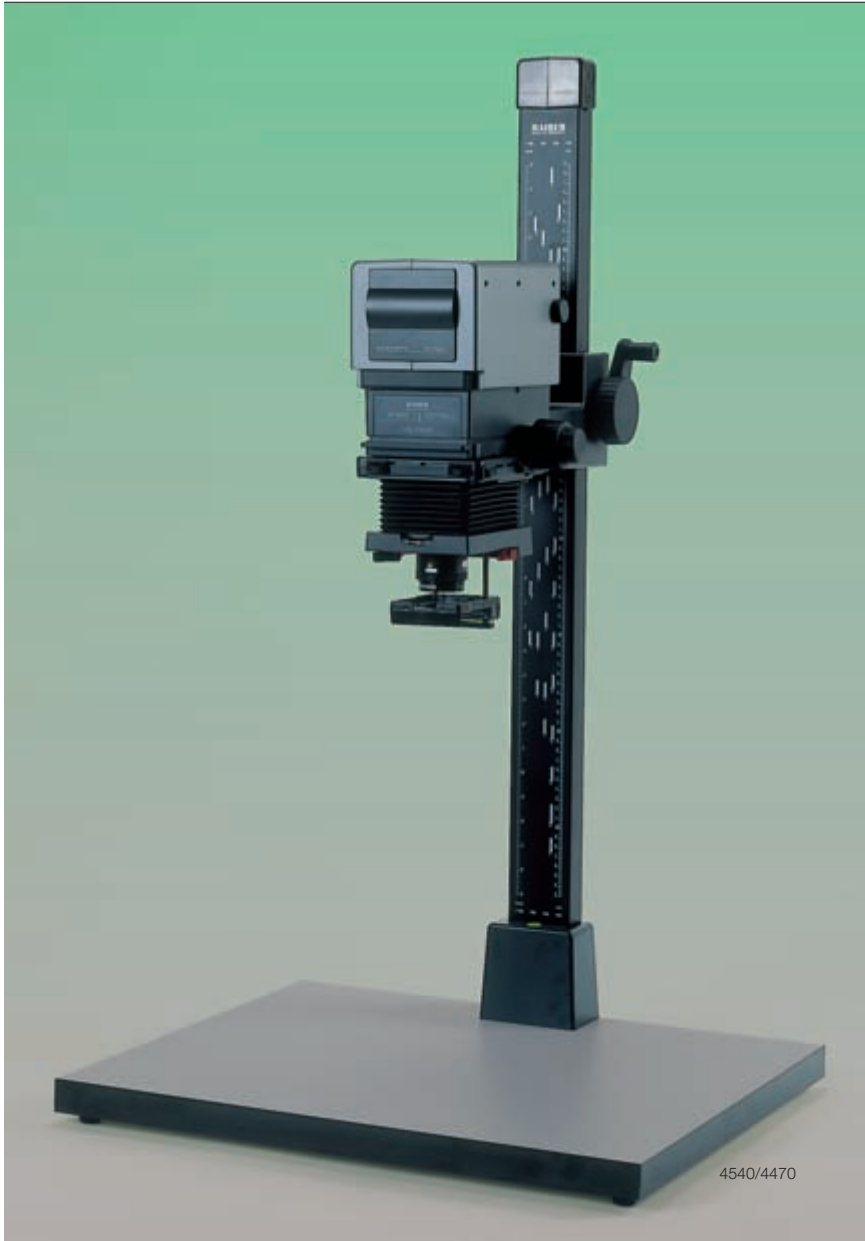
Multigrade® enlarger for 35 film (24 x 36 mm) and lenses up to 50 mm focal length. Can be converted to formats up to 6 x 9 cm.

Compound negative carrier fitted with 35 mm (24 x 36 mm) format masks.

Base board (WxDxH): approx. 450 x 500 x 28 mm (17.7 x 19.7 x 1.1 in.)



Multigrade is a registered trademark of Ilford Ltd.



B & W Enlargers SYSTEM-V

General specifications:

Lamp head with 75 W opal lamp, lamp adjustable. Exchangeable double condensor system. Filter drawer.

Removable compound negative carrier with interchangeable inserts, adjustable masking strips, adjustable film stops and grid pins. Lens stage with spirit level and red filter, tilt-able for distortion correction on Scheimpflug principle. Quick change attachment for lenses. Height adjustment by hand-crank operated friction drive on plastic bearings. Wall and floor projection possible.

Wide, vibration-resistant column of embossed aluminium tubing, with dull black anodized surface, cm and inch scales and markings for enlarging scales. Matt-gray laminated base board with individually height-adjustable feet. Spirit level on column base.

Technical specifications:

Lamp: Opal lamp 75 W, E 27 socket

Cord: approx. 2.50 m (8 ft. 2 in.)

Filter drawer: 85 x 85 mm (3.3 x 3.3 in.)

Column (HxWxD): approx. 1000 x 70 x 35 mm (39.4 x 2.8 x 1.4 in.)

Distance between optical axis and column base: approx. 220 mm (8.7 in.).

Can be converted into a copy stand.

Scope of supply: Incl. compound negative carrier, lamp and dust hood, without lens.



4356

4540
VP 9005

B & W enlarger for all film formats up to 6 x 9 cm (2.4 x 3.5 in.) and lenses up to 105 mm focal length.

Compound negative carrier fitted with Anti-Newton glass on top and flat glass on bottom.

Focusing with additional fine drive. Height adjustment with weight compensation by a roll-off spring mechanism.

Filter holder for square filters and framed Multigrade® filters, can be swung out and adjusted in height, with diffusor plate for integral metering.

Base board (WxDxH): approx. 600 x 500 x 32 mm (23.6 x 19.7 x 1.3 in.)

4470
VP 7005

B & W enlarger for all film formats up to 6 x 7 cm (2.4 x 2.8 in.) and lenses up to 105 mm focal length. Can be converted to a 6 x 9 enlarger.

Compound negative carrier fitted with Anti-Newton glass on top and 6 x 7 format mask on bottom.

Focusing with additional fine drive. Height adjustment with weight compensation by a roll-off spring mechanism.

Filter holder for square filters and framed Multigrade® filters, can be swung out and adjusted in height, with diffusor plate for integral metering.

Base board (WxDxH): approx. 600 x 500 x 32 mm (23.6 x 19.7 x 1.3 in.)

4465
VP 6005

B & W enlarger for all film formats up to 6 x 6 cm (2.4 x 2.4 in.) and lenses up to 80 mm focal length. Can be converted to formats up to 6 x 9 cm.

Compound negative carrier fitted with Anti-Newton glass on top and 6 x 6 format mask on bottom.

Base board (WxDxH): approx. 450 x 500 x 28 mm (17.7 x 19.7 x 1.1 in.)

4425
VP 3505

B & W enlarger for 35 film (24 x 36 mm) and lenses up to 50 mm focal length. Can be converted to formats up to 6 x 9 cm.

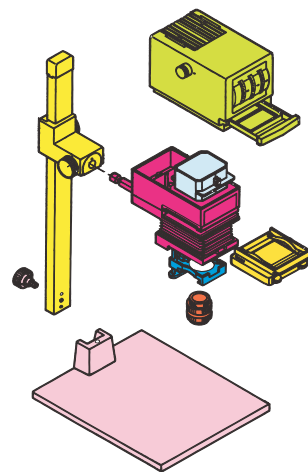
Compound negative carrier fitted with 35 mm (24 x 36 mm) format masks.

Base board (WxDxH): approx. 450 x 500 x 28 mm (17.7 x 19.7 x 1.1 in.)



Specs and More: A Survey

| SYSTEM-V | | | VCP 9005 | 4550 | VCP 7005 | 4480 | VCP 6005 | 4460 | VCP 3505 | 4420 | VPM 9005 | 4560 | VPM 7005 | 4471 | VPM 6005 | 4530 | VPM 3505 | 4426 | VP 9005 | 4540 | VP 7005 | 4470 | VP 6005 | 4465 | VP 3505 | 4425 | also for use with previous SYSTEM-V models | also for use with VP 350 (4401) |
|---|--|--|----------|------|----------|------|----------|------|----------|------|----------|------|----------|------|----------|------|----------|------|---------|------|---------|------|---------|------|---------|------|--|---------------------------------|
| Base Boards and Accessories | 4472 | Base Board 45 x 50 cm (17.7 x 19.7 in.) | ○ | ○ | ● | ● | ○ | ○ | ○ | ○ | ○ | ○ | ○ | ○ | ○ | ○ | ○ | ○ | ○ | ○ | ○ | ○ | ○ | ○ | ○ | ○ | ○ | ○ |
| | 4413 | Base Board 50 x 60 cm (19.7 x 23.6 in.) | ● | ○ | ○ | ○ | ○ | ○ | ○ | ○ | ○ | ○ | ○ | ○ | ○ | ○ | ○ | ○ | ○ | ○ | ○ | ○ | ○ | ○ | ○ | ○ | ○ | ○ |
| | 4414 | Base Board 60 x 80 cm (23.6 x 31.5 in.) | ○ | ○ | ○ | ○ | ○ | ○ | ○ | ○ | ○ | ○ | ○ | ○ | ○ | ○ | ○ | ○ | ○ | ○ | ○ | ○ | ○ | ○ | ○ | ○ | ○ | ○ |
| | 5508 | Base Stand | ○ | ○ | ○ | ○ | ○ | ○ | ○ | ○ | ○ | ○ | ○ | ○ | ○ | ○ | ○ | ○ | ○ | ○ | ○ | ○ | ○ | ○ | ○ | ○ | ○ | ○ |
| Columns and Accessories | 4473 | Column w/o weight compensation, 1 m (40 in.) | ○ | ○ | ● | ● | ○ | ○ | ○ | ○ | ○ | ○ | ○ | ○ | ○ | ○ | ○ | ○ | ○ | ○ | ○ | ○ | ○ | ○ | ○ | ○ | ○ | ○ |
| | 4474 | Column with weight compensation, 1 m (40 in.) | ● | ● | ○ | ○ | ○ | ○ | ○ | ○ | ○ | ○ | ○ | ○ | ○ | ○ | ○ | ○ | ○ | ○ | ○ | ○ | ○ | ○ | ○ | ○ | ○ | ○ |
| | 4475 | Column w/toothed rack and fine drive, 1 m (40 in.) | ○ | ○ | ○ | ○ | ○ | ○ | ○ | ○ | ○ | ○ | ○ | ○ | ○ | ○ | ○ | ○ | ○ | ○ | ○ | ○ | ○ | ○ | ○ | ○ | ○ | ○ |
| | 4476 | Column with toothed rack, 1 m (40 in.) | ○ | ○ | ○ | ○ | ○ | ○ | ○ | ○ | ○ | ○ | ○ | ○ | ○ | ○ | ○ | ○ | ○ | ○ | ○ | ○ | ○ | ○ | ○ | ○ | ○ | ○ |
| | 4408 | Column with toothed rack, 1.2 m (47 in.) | ○ | ○ | ○ | ○ | ○ | ○ | ○ | ○ | ○ | ○ | ○ | ○ | ○ | ○ | ○ | ○ | ○ | ○ | ○ | ○ | ○ | ○ | ○ | ○ | ○ | ○ |
| | 4409 | Column with weight compensation, 1.5 m (60 in.) | ○ | ○ | ○ | ○ | ○ | ○ | ○ | ○ | ○ | ○ | ○ | ○ | ○ | ○ | ○ | ○ | ○ | ○ | ○ | ○ | ○ | ○ | ○ | ○ | ○ | ○ |
| | 4412 | Wall Mount | ○ | ○ | ○ | ○ | ○ | ○ | ○ | ○ | ○ | ○ | ○ | ○ | ○ | ○ | ○ | ○ | ○ | ○ | ○ | ○ | ○ | ○ | ○ | ○ | ○ | ○ |
| 4455 | Extension Arm | ○ | ○ | ○ | ○ | ○ | ○ | ○ | ○ | ○ | ○ | ○ | ○ | ○ | ○ | ○ | ○ | ○ | ○ | ○ | ○ | ○ | ○ | ○ | ○ | ○ | ○ | |
| Enlarger Head Lower Part and Accessories | 4568 | Enlarger Head Lower Part | ● | ● | ○ | ○ | ○ | ○ | ○ | ○ | ○ | ○ | ○ | ○ | ○ | ○ | ○ | ○ | ○ | ○ | ○ | ○ | ○ | ○ | ○ | ○ | ○ | |
| | 4423 | Lens Holder Ring up to 50 mm focal length | ● | ● | ● | ● | ○ | ○ | ○ | ○ | ○ | ○ | ○ | ○ | ○ | ○ | ○ | ○ | ○ | ○ | ○ | ○ | ○ | ○ | ○ | ○ | ○ | |
| | 4424 | Lens Holder Ring 60 – 105 mm focal length | ● | ● | ● | ● | ○ | ○ | ○ | ○ | ○ | ○ | ○ | ○ | ○ | ○ | ○ | ○ | ○ | ○ | ○ | ○ | ○ | ○ | ○ | ○ | ○ | |
| Enlarger Heads and Accessories | | B&W Head, for formats up to 6 x 6 cm | ○ | ○ | ○ | ○ | ○ | ○ | ○ | ○ | ○ | ○ | ○ | ○ | ○ | ○ | ○ | ○ | ○ | ○ | ○ | ○ | ○ | ○ | ○ | ○ | ○ | |
| | 4541 | B&W Head, for formats up to 6 x 9 cm | ○ | ○ | ○ | ○ | ○ | ○ | ○ | ○ | ○ | ○ | ○ | ○ | ○ | ○ | ○ | ○ | ○ | ○ | ○ | ○ | ○ | ○ | ○ | ○ | ○ | |
| | 4544 | Color Head with density aperture | ● | ● | ● | ● | ○ | ○ | ○ | ○ | ○ | ○ | ○ | ○ | ○ | ○ | ○ | ○ | ○ | ○ | ○ | ○ | ○ | ○ | ○ | ○ | ○ | |
| | 4545 | Multigrade Head with density aperture | ○ | ○ | ○ | ○ | ○ | ○ | ○ | ○ | ○ | ○ | ○ | ○ | ○ | ○ | ○ | ○ | ○ | ○ | ○ | ○ | ○ | ○ | ○ | ○ | ○ | |
| | 4451 | Transformer with voltage stabilization | ○ | ○ | ○ | ○ | ○ | ○ | ○ | ○ | ○ | ○ | ○ | ○ | ○ | ○ | ○ | ○ | ○ | ○ | ○ | ○ | ○ | ○ | ○ | ○ | ○ | |
| | 4453 | Transformer w/o voltage stabilization | ○ | ○ | ○ | ○ | ○ | ○ | ○ | ○ | ○ | ○ | ○ | ○ | ○ | ○ | ○ | ○ | ○ | ○ | ○ | ○ | ○ | ○ | ○ | ○ | ○ | |
| | 4356 | Opal Lamp, 75 Watt | - | - | - | - | - | - | - | - | - | - | - | - | - | - | - | - | - | - | - | - | - | - | - | - | | |
| | 4459 | Halogen Cold Light Mirror Lamp | ● | ● | ● | ● | ○ | ○ | ○ | ○ | ○ | ○ | ○ | ○ | ○ | ○ | ○ | ○ | ○ | ○ | ○ | ○ | ○ | ○ | ○ | ○ | ○ | |
| Condensor Systems | 4443 | Double Condensor for formats up to 35 mm | ○ | ○ | ○ | ○ | ○ | ○ | ○ | ○ | ○ | ○ | ○ | ○ | ○ | ○ | ○ | ○ | ○ | ○ | ○ | ○ | ○ | ○ | ○ | ○ | ○ | |
| | 4542 | Double Condensor for formats up to 6 x 6 cm | ○ | ○ | ○ | ○ | ○ | ○ | ○ | ○ | ○ | ○ | ○ | ○ | ○ | ○ | ○ | ○ | ○ | ○ | ○ | ○ | ○ | ○ | ○ | ○ | ○ | |
| | 4449 | Double Condensor for formats up to 6 x 9 cm | ● | ● | ○ | ○ | ○ | ○ | ○ | ○ | ○ | ○ | ○ | ○ | ○ | ○ | ○ | ○ | ○ | ○ | ○ | ○ | ○ | ○ | ○ | ○ | ○ | |
| Compound Negative Carrier System | 4583 | Compound Negative Carrier w/o inserts | ● | ● | ● | ● | ○ | ○ | ○ | ○ | ○ | ○ | ○ | ○ | ○ | ○ | ○ | ○ | ○ | ○ | ○ | ○ | ○ | ○ | ○ | ○ | ○ | |
| | 4493 | Comp. Neg. Car. w. 6x6 mask/AN-glass for border exp. | ○ | ○ | ○ | ○ | ○ | ○ | ○ | ○ | ○ | ○ | ○ | ○ | ○ | ○ | ○ | ○ | ○ | ○ | ○ | ○ | ○ | ○ | ○ | ○ | ○ | |
| | 4584 | Compound Negative Carrier for 7 x 7 cm slides | ○ | ○ | ○ | ○ | ○ | ○ | ○ | ○ | ○ | ○ | ○ | ○ | ○ | ○ | ○ | ○ | ○ | ○ | ○ | ○ | ○ | ○ | ○ | ○ | ○ | |
| | 4486 | Pair of Format Masks 24 x 36 mm (35 mm) | ○ | ○ | ○ | ○ | ○ | ○ | ○ | ○ | ○ | ○ | ○ | ○ | ○ | ○ | ○ | ○ | ○ | ○ | ○ | ○ | ○ | ○ | ○ | ○ | ○ | |
| | 4491 | Pair of Format Masks 24.5 x 36.5 mm, border exposure | ○ | ○ | ○ | ○ | ○ | ○ | ○ | ○ | ○ | ○ | ○ | ○ | ○ | ○ | ○ | ○ | ○ | ○ | ○ | ○ | ○ | ○ | ○ | ○ | ○ | |
| | 4431 | Pair of Format Masks 4.5 x 6 cm | ○ | ○ | ○ | ○ | ○ | ○ | ○ | ○ | ○ | ○ | ○ | ○ | ○ | ○ | ○ | ○ | ○ | ○ | ○ | ○ | ○ | ○ | ○ | ○ | ○ | |
| | 4485 | Pair of Format Masks 6 x 6 cm | ○ | ○ | ○ | ○ | ○ | ○ | ○ | ○ | ○ | ○ | ○ | ○ | ○ | ○ | ○ | ○ | ○ | ○ | ○ | ○ | ○ | ○ | ○ | ○ | | |
| | 4436 | Pair of Format Masks 6 x 7 cm | ○ | ○ | ○ | ○ | ○ | ○ | ○ | ○ | ○ | ○ | ○ | ○ | ○ | ○ | ○ | ○ | ○ | ○ | ○ | ○ | ○ | ○ | ○ | ○ | ○ | |
| | 4487 | Pair of AN Glass Inserts | ○ | ○ | ○ | ○ | ○ | ○ | ○ | ○ | ○ | ○ | ○ | ○ | ○ | ○ | ○ | ○ | ○ | ○ | ○ | ○ | ○ | ○ | ○ | ○ | ○ | |
| | 4490 | Pair of Flat Glass Inserts | ○ | ○ | ○ | ○ | ○ | ○ | ○ | ○ | ○ | ○ | ○ | ○ | ○ | ○ | ○ | ○ | ○ | ○ | ○ | ○ | ○ | ○ | ○ | ○ | ○ | |
| | 4433 | Inserts AN Glass/Flat Glass | ● | ○ | ○ | ○ | ○ | ○ | ○ | ○ | ○ | ○ | ○ | ○ | ○ | ○ | ○ | ○ | ○ | ○ | ○ | ○ | ○ | ○ | ○ | ○ | ○ | |
| | 4435 | Inserts 24 x 36 Mask/AN Glass | ○ | ○ | ○ | ○ | ○ | ○ | ○ | ○ | ○ | ○ | ○ | ○ | ○ | ○ | ○ | ○ | ○ | ○ | ○ | ○ | ○ | ○ | ○ | ○ | ○ | |
| | 4434 | Inserts 6 x 6 Mask /AN Glass | ○ | ○ | ○ | ○ | ○ | ○ | ○ | ○ | ○ | ○ | ○ | ○ | ○ | ○ | ○ | ○ | ○ | ○ | ○ | ○ | ○ | ○ | ○ | ○ | ○ | |
| | 4432 | Inserts 6 x 7 Mask/AN Glass | ○ | ○ | ○ | ○ | ○ | ○ | ○ | ○ | ○ | ○ | ○ | ○ | ○ | ○ | ○ | ○ | ○ | ○ | ○ | ○ | ○ | ○ | ○ | ○ | ○ | |
| 4489 | Format Mask for 5 x 5 cm slides | ○ | ○ | ○ | ○ | ○ | ○ | ○ | ○ | ○ | ○ | ○ | ○ | ○ | ○ | ○ | ○ | ○ | ○ | ○ | ○ | ○ | ○ | ○ | ○ | ○ | | |
| 4492 | Pair of Panorama Format Masks 24 x 66 mm | ○ | ○ | ○ | ○ | ○ | ○ | ○ | ○ | ○ | ○ | ○ | ○ | ○ | ○ | ○ | ○ | ○ | ○ | ○ | ○ | ○ | ○ | ○ | ○ | ○ | | |
| 4494 | Pair of Masks for own cut-out | ○ | ○ | ○ | ○ | ○ | ○ | ○ | ○ | ○ | ○ | ○ | ○ | ○ | ○ | ○ | ○ | ○ | ○ | ○ | ○ | ○ | ○ | ○ | ○ | ○ | | |
| General Accessories | 4495 | Filter Holder | ● | ● | ○ | ○ | ○ | ○ | ○ | ○ | ○ | ○ | ○ | ○ | ○ | ○ | ○ | ○ | ○ | ○ | ○ | ○ | ○ | ○ | ○ | ○ | ○ | |
| | 4496-99 | Screw-On Filter Adapter | ○ | ○ | ○ | ○ | ○ | ○ | ○ | ○ | ○ | ○ | ○ | ○ | ○ | ○ | ○ | ○ | ○ | ○ | ○ | ○ | ○ | ○ | ○ | ○ | ○ | |
| | 4448 | Filter Drawer 85 x 85 mm | ○ | ○ | ○ | ○ | ○ | ○ | ○ | ○ | ○ | ○ | ○ | ○ | ○ | ○ | ○ | ○ | ○ | ○ | ○ | ○ | ○ | ○ | ○ | ○ | ○ | |



All SYSTEM-V enlargers can be converted into copy stands using the components of the R1 copy system (see pages 83-95).

- Standard equipment
- Combination possible, additional components could be necessary
- Combination not possible

4401
VP 350 B & W Enlarger



4356

For sizes up to 24 x 36 mm (35 mm film) and lenses up to 50 mm focal length. Floor projection possible. Removable compound negative carrier with negative masks for size 24 x 36 mm and slide sizes 5 x 5 cm (2 x 2 in.). Optically ground single condenser. Red filter within bellows extension for dust protection. Can accommodate filter drawer. Height adjustment by hand crank-operated friction drive on plastic bearings. Column with cm and inch scales.

The enlarger is convertible to sizes up to 6 x 9 cm and to a Color or Multigrade enlarger.

Supplied with compound negative carrier and lamp, without lens.

Specifications:

Base board (WxDxH): approx. 400 x 420 x 25 mm (15.7 x 16.5 x 1 in.)

Height of column: approx. 760 mm (30 in.)

Maximum enlargement on base board:
24 x 30 cm (9.4 x 4.8 in.)

Lamp: Opal lamp 75 W

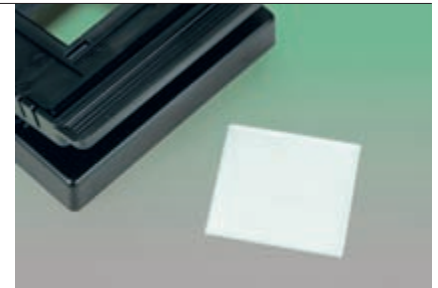
Cord: ca. 2.50 m (8 ft. 2 in.)



4403
AN Glass Insert

Glass insert with specially etched contact surface to prevent Newton rings. For insertion into the upper part of the compound negative carrier of the VP 350.

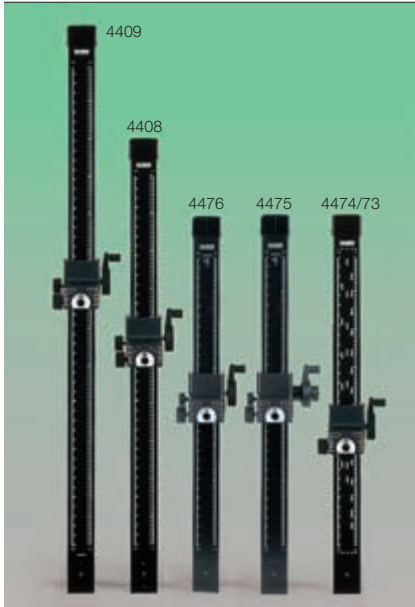
Dimensions: 50 x 52 mm (2 x 2 in.)



5421
RA 2 XA Copy Adapter

To convert the VP 350 to a copy stand. Horizontally adjustable. 1/4" camera thread.





4473-76/4408-09 Column

Made of aluminium tubing, dull black anodized surface, with cm and inch scales and markings for enlarging scales. With mount and fastening for lower part enlarger head 4568. Height adjustment by hand crank.

4473: Height adjustment by friction drive with plastic bearings, without weight compensation, height 1 m (40 in.).

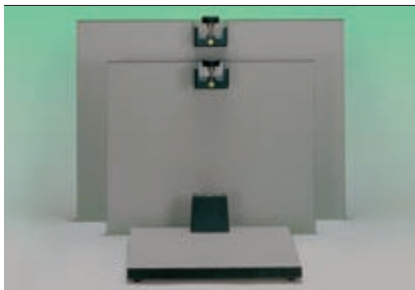
4474: Height adjustment by friction drive with plastic bearings, with weight compensation by built-in roller-spring, height 1 m (40 in.).

4475: Rack-and-pinion height adjustment, with weight compensation by built-in roller-spring, additional 1:10 fine drive. Locking screw for fixing the adjusted height. Height 1 m (40 in.).

4476: same as 4475, but without fine drive.

4408: Rack-and-pinion height adjustment, with weight compensation by built-in roller-spring. Locking screw for fixing the adjusted height. Height 1.2 m (47 in.).

4409: Height adjustment by friction drive with plastic bearings, with weight compensation by built-in roller-spring, Locking screw for fixing the adjusted height. Height 1.5 m (60 in.).



4472/4413-14 Base Board

Matt-gray base board with column base fixed for attaching column. Spirit level in column base. Individually height-adjustable feet.

Dimensions (WxHxD):

4472: approx. 450 x 28 x 500 mm
(17.7 x 1.1 x 19.7 in.)

4413: approx. 600 x 32 x 500 mm
(23.6 x 1.3 x 19.7 in.)

4414: approx. 800 x 32 x 600 mm
(31.5 x 1.3 x 23.6 in.)

(Dimensions without base and feet)

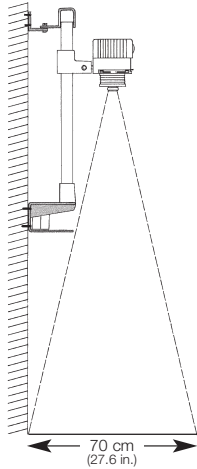


5508 Base Stand

For converting all SYSTEM-V enlargers from table to free-standing models. Also suitable for all Kaiser base boards from 45 x 50 cm to 60 x 80 cm (17.7 x 19.7 in. to 23.6 x 31.5 in.) and for RSD copy stands. Height-adjustable feet.

Dimensions (WxHxD): approx. 580 x 510 x 595 mm (22.8 x 20.1 x 23.4 in.)

4412 Wall Mount



Strong wall mount for all Kaiser columns 70 mm (2.8 in.) wide. Required if projection is not made on base board but on larger-sized table or the floor, especially to achieve large enlarging scales.

Wall mounting with 6 screws. Upper part adjustable for absolutely vertical position. Lower part with base and spirit level and space for transformer.

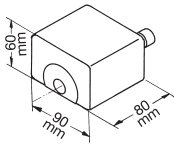
Maximum possible enlargement with lens $f = 50$ mm: 70 x 105 cm (27.5 x 41.3 in.)
 $L = 29x$, linear.

Entire height with 1 m (40 in.) column: 1.16 m (46 in.)

Supplied with screws and dowels.



4455 Extension Arm



To extend the holding arm on enlargers. Required for large-dimension enlargements. This increases the distance between the optical axis and the base by 80 mm (3.1 in.). The extension arm is attached between the standard holding arm and the enlarger head. Dimensions (WxHxD): approx. 115 x 60 x 135 mm (4.5 x 2.4 x 5.3 in.)



4568 Enlarger Head Lower Part

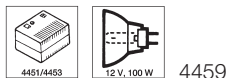
Consists of condenser housing with bellows and lens stage, without condenser system and compound negative carrier. With lens adapter rings for lenses up to 50 mm and from 60 up to 105 mm focal length. Quick change attachment for easy lens mounting. Also required for converting Kaiser copy stands into enlargers.





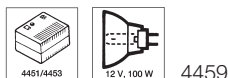
4544 Color Head

Suitable for all Kaiser enlargers. Dichroic interference filters, calibration in densitometric units up to 180. Dials indirectly illuminated. White-light lever continuously adjustable, illuminated density aperture up to 60 densitometric densities (= two aperture settings). Best possible light distribution due to special diffusor plate. UV filter and IR filter. Drawer for additional filter. May only be operated with transformer 4451 and 4453. Supplied with halogen cold light mirror lamp (12 V, 100 W, socket GZ 6.35) Filter drawer: 85 x 85 mm (3.3 x 3.3 in.) Cord: 1.8 m (6 ft.) Dimensions: approx. 160 x 250 x 125 mm (WxHxD) (6.3 x 5.9 x 8.8 in.)



4545 Multigrade® Head

Suitable for all Kaiser enlargers. With dichroic colour filter for processing variable contrast printing papers without changing the exposure time. Indirectly illuminated scale dial calibrated in half steps from 0 (extra soft) to 5 (extra hard) for stepless gradation control. White-light lever for simultaneous swinging in and out of filters, with control light. Continuously adjustable, illuminated density aperture up to 60 densitometric densities (= two aperture settings). Best possible light distribution due to special diffusor plate. UV filter and IR filter. Drawer for additional filter. May only be operated with transformer 4451 and 4453. Supplied with halogen cold light mirror lamp (12 V, 100 W, socket 6.35). Same dimensions as with 4544.



4541 B & W Head

Suitable for all Kaiser enlargers. Lamp adjustable. Drawer for additional filters. Supplied with opal lamp. Specifications:
Lamp: Opal lamp, 75 W
Filter drawer: 85 x 85 mm (3.3 x 3.3 in.)
Cord: approx. 2.5 m (8.2 ft.), with cord switch
Dimensions: 145 x 150 x 245 mm (WxHxD) (5.7 x 5.9 x 9.6 in.)



**4451/4453
Transformer**

Output power: 100 W
Dimensions: approx. 120 x 80 x 140 mm
(4.7 x 3.1 x 5.5 in.)
Available for 230 V, 240 V and 120 V
Fuse: 1.6 AT (230/240V) / 2.5 AT (120V)

4451: with starting-current limitation and electronic voltage stabilization. For compensation of voltage deviations (for constant color temperature).

Input: 230 V, + 10%, -15%, 50 Hz
Output: 11.5 V ± 1%, 50 Hz

4453: without voltage stabilization
Input: 230 V, 50 Hz
Output: 12 V, 50 Hz



**4459
Halogen Cold-Light Mirror Lamp**

12 V, 100 W, 3200 K, average service life 50 hrs. Lamp with high light yield and constant light radiation and color temperature during the entire service life. Low heat stress on the film due to the cold-light mirror.



**4356
Opal Lamp**

75 W, E 27. Average service life 100 hrs. Lamp with bright light output. Uniform light density due to special inner coating of the bulb. Colour temperature: 3000 K



**4443/4449/4542
Double Condenser**

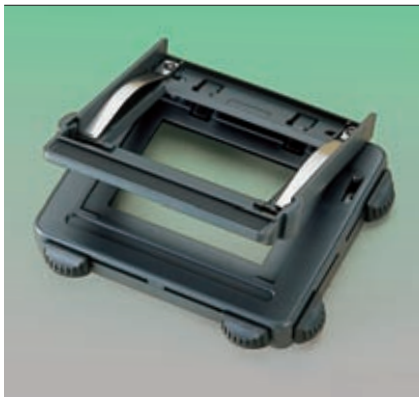
For SYSTEM-V enlargers. Simple fitting with two coin screws on the head base.

4449: for formats up to 6 x 9 cm (2.4 x 3.5 in.). Fits all enlargers made from 10/94 on (05 series).

4542: for formats up to 6 x 6 cm (2.4 x 2.4 in.)

4443: for formats up to 24 x 36 mm (35 mm).





4583
Compound Negative Carrier

For use with all negative masks and glass inserts size 100 x 72.5 mm (3.9 x 2.9 in.). Suitable for all SYSTEM-V enlargers made from 10/94 on (05 series).

Adjustable guide pins for film widths 61.5 mm (rollfilm 120), 41 mm (rollfilm 127) and 35 mm film. Four steplessly adjustable masking strips for selecting the desired detail. Two grid pins at standard hole intervals.

Dimensions: approx. 142 x 37 x 123 mm
(5.6 x 1.4 x 4.8 in.)



4584
**Compound Negative Carrier
for 7 x 7 cm Slides**

For mounted 6 x 6 slides with outer dimensions 7 x 7 cm (2.8 x 2.8 in.). Suitable for all SYSTEM-V enlargers made from 10/94 on (05 series). Four steplessly adjustable masking strips for selecting the desired detail.

Dimensions: approx. 142 x 37 x 123 mm
(5.6 x 1.4 x 4.8 in.)



4493
**Compound Negative Carrier
for Border Exposure 6 x 6 cm**

For pictures with a black border. Comes with 6 x 6 format mask for border exposure and AN glass.

Also for use with all negative masks and glass inserts size 100 x 72.5 mm (3.9 x 2.9 in.). Suitable for all SYSTEM-V enlargers made from 10/94 on (05 series).

Adjustable guide pins for film widths 61.5 mm (rollfilm 120), 41 mm (rollfilm 127) and 35 mm film. Four steplessly adjustable masking strips for selecting the desired detail. Two grid pins at standard hole intervals.

Dimensions: approx. 142 x 37 x 123 mm
(5.6 x 1.4 x 4.8 in.)

Format Masks and Inserts

For insertion into the 4583 compound negative carrier of SYSTEM-V enlargers and for 4493 compound negative carrier.

Dimensions: approx. 100 x 72.5 mm
(3.9 x 2.9 in.)

4431/36/85/86/91/92 Format Masks

Pairs of masks.

4486: Format masks 24 x 36 mm (35 mm (a + b)). With guide ridges for film strips and neg number read-out window.

4491: Format masks 24.5 x 36.5 (a + b). For pictures with black border

4431: Format masks 4.5 x 6 cm

4485: Format masks 6 x 6 cm

4436: Format masks 6 x 7 cm

4492: Panorama format masks 24 x 66 mm, e.g. for Hasselblad X-pan, Noblex 135 and Mamiya 7 with 35 mm panorama insert.

4432/4434-35 Anti-Newton Glass/Mask

Pairs of inserts.

4435: AN glass/format mask 24 x 36 (b)

4434: AN glass/format mask 6 x 6 cm

4432: AN glass/format mask 6 x 7 cm

4433/87/90 Glass Inserts

Pairs of inserts.

4487: AN glass

4433: AN glass/flat glass

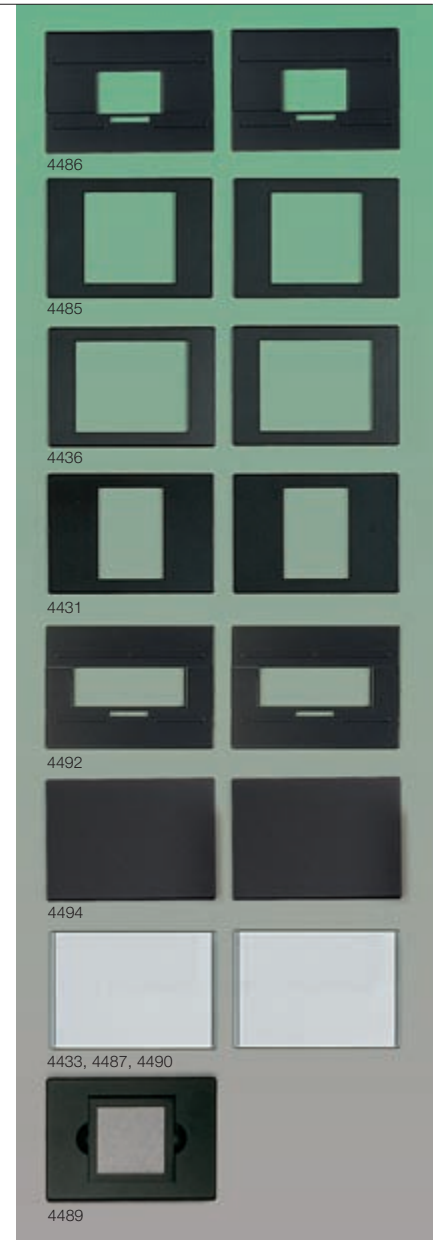
4490: Flat glass

4489 Format Mask

For mounted 35 mm slides with 5 x 5 cm (2 x 2 in.) outer dimensions.

4494 Inserts

Without cut-out. For „do-it-yourself“ cut.
1 pair.





Rodenstock Enlarging Lenses

Rogonar: For enlarging scales up to 4:1. For almost all B&W work, can be used for color enlarging with some restrictions.

Rogonar-S: Almost unlimited application in B & W enlarging, in color up to enlarging scales of approx. 10:1.

Rodagon: Almost unlimited application for all B & W and color enlarging.

Apo-Rodagon N: For highest standards. Brilliant color reproduction with apochromatic correction.



| Code no. | Designation | Lens speed | Focal length | Elements | Click-stop disengaging | Aperture presetting | Aperture scale illuminated | Filter thread | max. film format |
|----------|----------------|------------|--------------|----------|------------------------|---------------------|----------------------------|---------------|------------------|
| 4363 | Rodagon-WA | 4.0 | 40 mm | 6 | • | • | • | 40.5 mm | 24 x 36 mm |
| 4355 | Rogonar | 2.8 | 50 mm | 3 | - | - | - | | |
| 4365 | Rogonar-S | 2.8 | 50 mm | 4 | • | • | • | 40.5 mm | |
| 4367 | Rodagon | 2.8 | 50 mm | 6 | • | • | • | 40.5 mm | |
| 4469 | Apo-Rodagon N | 2.8 | 50 mm | 6 | • | • | • | 40.5 mm | |
| 4360 | Rogonar-S | 4.5 | 75 mm | 4 | • | • | • | 40.5 mm | 6 x 6 cm |
| 4341 | Rodagon | 4.0 | 80 mm | 6 | • | • | • | 40.5 mm | 6 x 7 cm |
| 4340 | Apo-Rodagon N | 4.0 | 80 mm | 7 | • | • | • | 40.5 mm | |
| 4327 | Rodagon | 5.6 | 105 mm | 6 | • | • | • | 40.5 mm | 6 x 9 cm |
| 4329 | Apo-Rodagon N | 4.0 | 105 mm | 7 | • | • | • | 40.5 mm | |
| 4349 | Apo-Compton HM | 2.8 | 40 mm | 6 | • | • | • | 43 mm | 24 x 36 mm |
| 4336 | Apo-Compton HM | 4.0 | 45 mm | 6 | • | • | • | 43 mm | |
| 4382 | Compton-S | 2.8 | 50 mm | 6 | • | • | • | 43 mm | |
| 4350 | Apo-Compton HM | 4.0 | 60 mm | 6 | • | • | • | 43 mm | 6 x 6 cm |
| 4384 | Compton-S | 4.0 | 80 mm | 6 | • | • | • | 43 mm | 6 x 7 cm |
| 4337 | Apo-Compton HM | 4.5 | 90 mm | 6 | • | • | • | 43 mm | |
| 4338 | Compton-S | 5.6 | 100 mm | 6 | • | • | • | 43 mm | 6 x 9 cm |

All enlarging lenses with M 39 x 1 mounting thread.

4423-24 Lens Holder Ring

Rodagon-WA: Wide-angle lens for highest performance. For achieving large enlarging scales at normal distance to base board.

Schneider Enlarging Lenses

Compton-S: For highest demands and all enlarging scales.

Apo-Compton HM: Apochromatic corrected lens for highest demands and all enlarging scales.

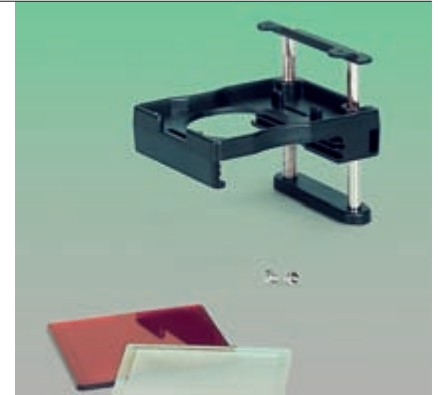
For the fast mounting of lenses on SYSTEM-V enlargers made from 10/94 on (05 series).

4423: for lenses up to 50 mm focal length

4424: for lenses from 60 to 105 mm focal length

4495
Filter Holder for Enlargers

Device for positioning filters and masks below the enlarging lens. For all Kaiser enlargers built after 1981. Mounted on vertical parallel rods. Height of filter tray steplessly adjustable, can be swung out of line of beam. Two grooved insertion planes for square filter plates (for filters between 64 and 67 mm (2.5 and 2.6 in.) width and 2 mm (.1 in.) max. thickness) and for adapters for screw-on filters. One grooved insertion plane for masks, pinhole diaphragms etc. up to 1.5 mm (.06 in.) max. thickness. Special holding device for framed filters for variable contrast printing papers. Supplied with red filter and diffusor plate for integral metering.



4496-99
Screw-on Filter Adapter

Allows for the use of screw-on filters with filter holder 4495.

- 4496:** for screw-on filter \varnothing 49 mm (1.9 in.)
- 4497:** for screw-on filter \varnothing 52 mm (2.0 in.)
- 4498:** for screw-on filter \varnothing 55 mm (2.2 in.)
- 4499:** for screw-on filter \varnothing 58 mm (2.3 in.)



4417
Gray Filter

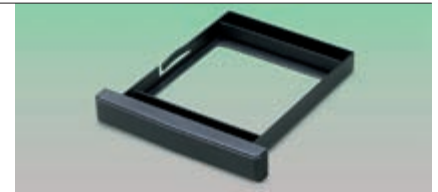
For use in 4495 Filter Holder.
Reduces light intensity by two aperture increments. Filter factor 4.

Dimensions: 67 x 67 mm (2.6 x 2.6 in.)



4448
Filter Drawer

For all Kaiser enlargers. For filter inserts size 8.5 x 8.5 cm (3.3 x 3.3 in.)



4437
Heat Filter

For the protection of negatives and acetate or gelatine filters in B & W enlargers against heat stress during continuous operation. Fits in suitable filter drawers.

Dimensions: approx. 70 x 70 mm
(2.8 x 2.8 in.)





5979
Slide Copying Kit

Consists of holder and cover for the up-turned color head. Allows the use of any Kaiser colour head as light source for slide copying.



5976
4 x 5" Slide Copying Adapter

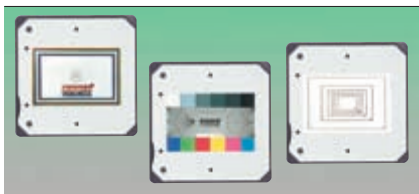
To duplicate slides up to 4 x 5" in conjunction with the 4544 Color Mixing Head (see page 222). The adapter is mounted on the turned over color mixing head. Supplied with adapter plate so that a Kaiser negative carrier can be positioned on the slide copying adapter.



4489
Negative Mask for 5 x 5 cm Slides

For mounted slides with outer dimensions 5 x 5 cm (2 x 2 in.). For insertion into 4583 Compound Negative Carrier.

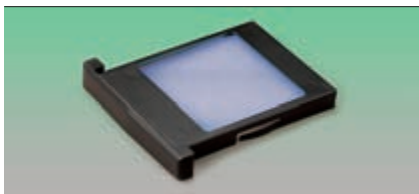
Dimensions: 100 x 72.5 mm (3.9 x 2.9 in.)



5969
Test Slides

For determining picture frame for copying 1:1. For determining correct exposure times for cropping and as an aid to establishing exposure, filtration and focus.

The set consists of 3 framed 35 mm slides.



5974
Conversion Filter

To be exchanged with the filter drawer of the color head. Required if slide copying is done with daylight film.

Dimensions: approx. 8.5 x 8.5 cm (3.3 x 3.3 in.)

Tools for Picture-Makers

The enlarger is the most important device in the darkroom. But in addition there is a wide range of supplementary tools to make exposing photographic paper easier and more reliable. The basic equipment should at least comprise a safelight for a „safe“ basic illumination, a masking frame or easel for holding the photographic paper and a timer to control the exposure time.

Test printer and focus magnifier round off the equipment.

Developing the exposed photo paper requires lab trays (a minimum of three), print tongs, bottles for photo chemicals, graduates and beakers to measure and mix the chemicals, a process timer, a thermometer and a drying rack as basic equipment.

If you also want to do your own film developing, you will also need a developing tank with a self-loading reel, bottles, graduates and funnels for the photo chemicals, a thermometer, a

process timer, film clips to hang up wet films and a pair of scissors.

Some basic knowledge is indispensable – there are many useful books – and some exercise is also needed. For this you will need time. The reward for your efforts are pictures which in their own way are unique and which bear the distinctive hand of their „maker“.

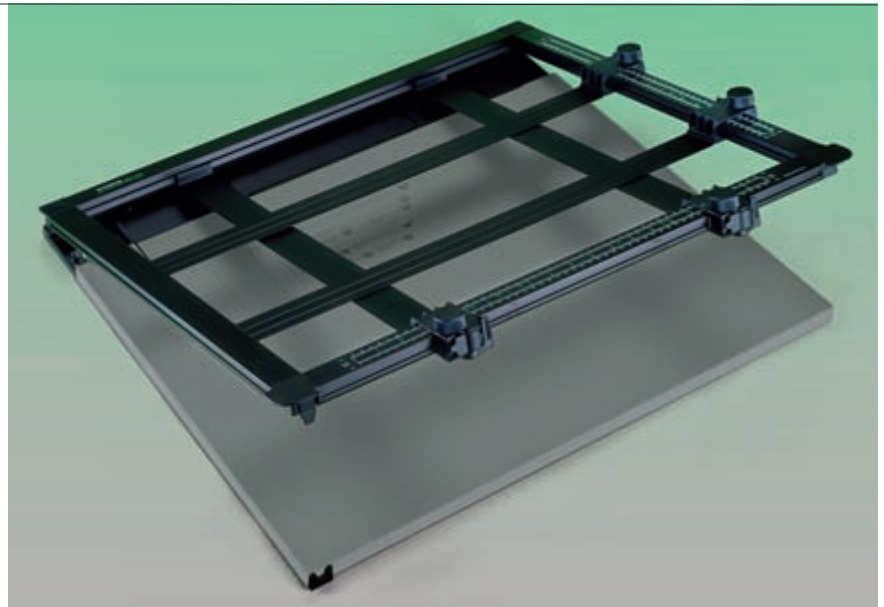
4704-06 „promask“ Professional Masking Frame

Margin stop with preclamping device, format markings and sinkable grid pins for centered positioning of photo paper. Grid pins at standard hole intervals. Frame made of non-warping moulded aluminium. Scales in cm and inch. Pneumatic spring with end position damping. Raised frame stays open. Four sliding masking strips with fast adjustment and fine setting by friction drive, lockable. Border width adjustable from 2 to 45 mm (0.08 to 1.8 in.). Each strip is individually adjustable. Light grey base plate. Non-slip rubber feet.

4704: For formats up to 30 x 40 cm (12 x 16 in.) Dimensions: 630 x 70 x 515 mm (24.8 x 2.8 x 18.4 in.)

4705: For formats up to 40 x 50 cm (16 x 20 in.) Dimensions: 725 x 70 x 620 mm (28.5 x 2.8 x 24.4 in.)

4706: For formats up to 50 x 60 cm (20 x 24 in.) Dimensions: 830 x 70 x 718 mm (32.7 x 2.8 x 28.3)





4001
Masking Frame
24 x 30 cm (9 1/2 x 12 in.)

Metal base plate with non-slip base and dull white surface. Adjustable margins for borders from 5 to 12 mm (0.2 to 0.5 in.). Metal dull black masking frame with cm and inch scales and snap paperholding mechanism. Bilaterally guided self-adjusting masking bands with instant-lock push buttons.

Maximum print size 28 x 36 cm (11 x 14.2 in.).
Dimensions: (WxHxD): approx.
470 x 30 x 395 mm (18.5 x 1.2 x 15.6 in.)



4009
Test Printer

For producing test strips to determine exposure time and filter setting for enlargements. Top with six separately opened shutters. Turning the paper around after the first exposure makes a total of 12 exposures possible on one sheet of 13 x 18 cm (5 x 7 in.).

Dimensions: approx. 180 x 160 mm
(7.1 x 6.3 in.)



4005
„focuscop“ Focus Magnifier

For reliable focus control in enlarging. Double lens system with 4 x magnification. Focus control using both eyes. Bright, distortion-free image on focussing screen, wide viewing angle.

Dimensions (WxHxD): approx.
65 x 105 x 120 mm (2.6 x 4.1 x 4.7 in.)

6361
Antistatic Cloth

Lint-free, especially treated cloth.
Dimensions: approx. 24 x 30 cm
(9.4 x 11.8 in.)



6363
Special Antistatic Cloth

High-grade lint-free cloth with chainstitched border for cleaning and antistatic treatment of films, glass, and lenses. Also suitable for phonograph records, plastic parts and plastic-coated surfaces.
Dimensions: approx. 24 x 30 cm
(9.4 x 11.8 in.)



6308-10
„Clear Gear“ Compressed Air

For touch-free dust removal from optical, fine mechanical and electronic equipment and components.

6308: 200 ml, propane/butane mixture.

6309: 400 ml, non-inflammable fluorethane mixture.

6310: 400 ml, propane/butane mixture.



6362/65/67
Cotton Gloves

To prevent fingerprints on prints, negatives optical glass, etc. 100 % cotton, washable at all temperatures.

6362: One pair, size XL

6365: One pair, size L (standard size)

6367: Three pairs, size L



4065
Lab Apron

Acid-resistant and washable, made of light pleasant-to-wear material, with seamed edges. Matt black with pocket.

Length: approx. 1 m (40 in.)

Width: approx. 70 cm (28 in.)





4018 Darkroom Safelight

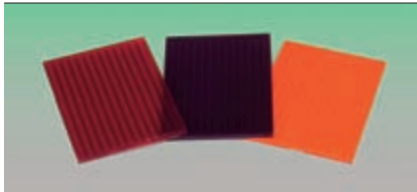


2008

Dull black plastic housing. Top tiltable from 0 to 40°. Can be used as wall or table-top light. Mounting on wall can be done either for direct or indirect lighting of working area. With 9 x 12 cm (3.5 x 4.7 in.) filter for Multigrade papers and graded B&W papers.

Lamp: 15 W, E 14
Cord with cord switch: approx. 1.8 m (6 ft.)
Dimensions: approx. 140 x 110 x 90 mm
(5.5 x 4.3 x 3.5 in.)

Supplied with lamp.



4013-15 Safelight Filter

Size 9 x 12 cm (3.5 x 4.7 in.), for 4018 darkroom safelight.

4013: Orange, for B&W silver chlorobromide papers.

4014: Red, for orthochromatic papers and films and B&W graded papers.

4015: Multigrade, for variable contrast papers and B&W graded papers.



4227 Darkroom Lamp

Red. 15 W, 230 V, E 27.
Can be used together with clamp-on lamp holder, for example.



4030 „digital timer“ Electronic Exposure Timer

2-digit amber-colored display. Time count-down to zero, then reset to starting time (can be repeated any number of times for exposure series). Interrupt and restart of remaining time, and interruption with direct reset to the set starting time are likewise possible. Focusing light switch.

Time range: 0.1 - 99 seconds
Display: 0.1 - 9.9 seconds in 10th sec. increments, and 10-99 seconds in sec. increments

Maximum switching capacity: 500 W

Dimensions: approx. 100 x 75 x 152 mm
(3.9 x 3 x 6 in.)

Power cable: 2 m (6 ft. 7 in.)

4218
Digital Lab Timer

Four-figure LCD display for minutes and seconds. Count-down. Time preset up to max. 99 minutes 59 seconds. Acoustic signal for count-down to zero. Interruption possible. Set starting time retrievable. Magnet on the back for simple fixing to metal surfaces. Including button battery: 1.5 V, type G-13.

Dimensions: approx. 88 x 14 x 46 mm
(3.5 x .6 x 1.8 in.)



4219
Process Timer

Three independent channels for separate timing, in addition clock, alarm and calendar functions. Time preset up to max. 99 hours, 59 minutes and 59 seconds. Acoustic signal for count-down to zero. Set starting times retrievable. Interruption possible. Counts upwards after count-down to zero. Various acoustic signals for simple identification of different channels. Holder clip for pocket or belt, folding stand foot and magnet for fixing to metal surfaces. Including button battery: 1.5 V, type G-13. Dimensions: approx. 82 x 15 x 70 mm (3.2 x .6 x 2.8 in.).



4092
„digi-thermo F“
Digital Thermometer

Battery-powered multi-purpose thermometer with four-digit LCD display, switchable from °C to °F. Fast response. Minimum and maximum temperature memory. Temperature alarm function with high and low limits. Actual value can be displayed permanently. Automatic cut-off. Stainless steel probe with 1 m (3 ft.) cord. Foldable stand.

Temperature range: -50°C ... +300°C
(-58°F ... +572°F)

Accuracy: ± 1°C (± 1.8 °F) in the range of -30°C ... +250°C (-22°F ... +482°F)

Battery: 1.5 V, G13 (or equivalent) included
Dimensions (w/o probe): 120 x 69 x 20 mm
(4.7 x 2.7 x 0.8 in.)



4026
Gradation Calculator

Calculator disk to determine the correct gradation.





4080
Developing Tank Thermometer

Alcohol-filled. Unbreakable plastic stem.
With centigrade scale: -10 to 50° C.
With marker at 18° C.
Length: 130 mm (5.1 in.); ø 12 mm (.5 in.)



4081
Developing Tank Thermometer

Alcohol-filled. With centigrade and Fahrenheit scales: 0 to 50° C/32 to 120° F.
With marker at 18° C/64° F.
Length: 120 mm (4.7 in.), ø 11 mm (.4 in.)



4084
Floating Thermometer

With lead weight to ensure vertical position in the liquid and measurement under the surface. Alcohol-filled bulb. Centigrade and Fahrenheit scales: 0 ... 50° C/32 ... 120° F.
With marking at 18° C/64° F.
Length: 125 mm (4.9 in.), ø 11 mm (.4 in.)



4083
Tray Thermometer

With angled stem and hook for hanging it on tray's edge. Alcohol-filled bulb. Centigrade and Fahrenheit scales: 0 ... 50° C/32 ... 120° F.
With marking at 18° C/64° F. Length: 85 mm + 40 mm of angled stem (3.3 + 1.6 in.), ø 10 mm (.4 in.)



4086
Precision Thermometer

Especially suited for color processing. Alcohol-filled bulb. Luminous blue capillary. Scale from 10 to 50° C, calibrated in steps of .2 degrees, margin of error ± .2°. Max. immersion depth 60 mm (2.4 in.).
Length: 195 mm (7.7 in.), ø 12 mm (.5 in.)



4067
Print Tongs

Stainless steel, insensitive to photochemicals. With spiral spring and catch for hanging on side of tray. With protective caps especially designed for working with plastic-coated papers.
Length: 150 mm (6 in.) 2 pieces.



4062
Print Tongs

Made of chemical-resistant plastic; self-opening. Molded tray edge recess. One pair of different-coloured print tongs.
Length: 160 mm (6.3 in.)



4059
Print Tongs and Clamp

Print tongs made of chemical-resistant plastic, self-opening. Molded tray-edge recess. Can also be used as film or print clamp.
Length: 180 mm (7.1 in.) Set of two.

4151-78 Lab Trays

Made of shock-resistant plastic. Acid-proof. Heat resistant up to 80° C (176° F). Grooved bottom enhances removal of paper and ensures best possible flow for chemicals and stability. With pouring lip. 4171-73 with recess for tray thermometer.

| For sizes up to | White | Black | Red | Dimensions (LxWxH): approx. mm/in. |
|-----------------------|-------|-------|------|---------------------------------------|
| 13 x 18 cm / 5 x 7" | 4151 | 4152 | 4153 | 235 x 185 x 50 / 9.3 x 7.3 x 2 |
| 20 x 25 cm / 8 x 10" | 4156 | 4157 | 4158 | 325 x 260 x 65 / 12.8 x 10.2 x 2.6 |
| 24 x 30 cm / 9½ x 12" | 4166 | 4167 | 4168 | 375 x 315 x 70 / 14.8 x 12.4 x 2.8 |
| 30 x 40 cm / 12 x 16" | 4171 | 4172 | 4173 | 460 x 360 x 85 / 18.1 x 14.2 x 3.3 |
| 40 x 50 cm / 16 x 20" | 4176 | | 4178 | 580 x 490 x 95 / 22.8 x 19.3 x 3.7 |



4141 Dish Warmer

For one dish up to 30 x 40 cm (11.8 x 15.7 in.) or two dishes 20 x 25 cm (7.9 x 9.8 in.). All-metal housing in a black stoved-enamelled finish. Adjustable thermostat for automatic temperature control. ON/OFF switch and control light. Power cable: approx. 2 m (6 ft. 7 in.).

Heating capacity: 300 Watt
Control range: approx. 20 - 45°C (68 - 113 °F)
Tolerance: approx. ±0.5°
Dimensions (WxHxD): approx. 310 x 60 x 450 mm (12.2 x 2.4 x 17.7 in.)





4192-95
Chemical Storage Bottle

Made of polyethylene, unbreakable and acid-proof. With screw cap and blank label.

- 4192:** 1000 ml, white
- 4193:** 1000 ml, brown
- 4194:** 2000 ml, white
- 4195:** 2000 ml, black



4198-99
Accordion Bottle

For photochemicals. Black. The accordion-like walls can be pressed together, setting excess air free. This reduces the danger of oxidation and allows for longer storage of chemicals.

With screw-on cap.

- 4198:** 550-1000 ml
- 4199:** 900-2000 ml



4250-55
Graduate

Made of Chemical-resistant polypropylene. Temperature-resistant up to 95 °C (203 °F). With pouring lip and wide base for steady stand. Graduated scale.

| | Content | Scale steps | Height mm/in. |
|--------------|---------|-------------|---------------|
| 4250: | 50 ml | 1 ml | 150/6 |
| 4252: | 100 ml | 2 ml | 160/6.3 |
| 4253: | 250 ml | 5 ml | 195/7.7 |
| 4254: | 500 ml | 10 ml | 220/8.7 |
| 4255: | 1000 ml | 20 ml | 285/11.2 |



4256-57
Graduated Beaker

Made of chemical-resistant plastic. Temperature-resistant in excess of 80 °C (176 °F). With pouring lip and scale.

| | Content | Scale steps | Height mm/in. |
|--------------|---------|-------------|---------------|
| 4256: | 1000 ml | 10 ml | 150/5.9 |
| 4257: | 2000 ml | 20 ml | 215/8.5 |

4243
Funnel

For handling photochemicals. Made of non-breakable chemical-resistant polyethylene. Ribbed barrel to prevent airlocks and facilitate fast pouring.
Diameter: 120 mm (4.7 in.)
Height: 170 mm (6.7 in.)

4296
„Standard“ Developing Tank

With adjustable self-winding reel for film size 135 (35 mm), 126, 127, 120 or 220 (roll film). Tank and reel made of nonbreakable plastic. Quick-drain outlet.

Capacity: one film size 135 (35 mm) or two films size 126 or two films size 127 or one film size 220 or two films size 120.

Max. quantity: 500 ml

Dimensions: ø 100 mm (3.9 in.), height approx. 160 mm (6.3 in.)

Additional reel 4298 available.



4298
Self-Winding Reel

For films size 135 (35 mm), 126, 127, 120 or 220. Fits 4296 and 4297 developing tanks.

4297
„Universal“ Developing Tank

With two adjustable self-winding reels. For film sizes 135 (35 mm), 126, 127, 120 or 220 (roll film). Tank and reels made of non-breakable plastic. Quick-drain outlet.

Capacity: two films size 135 (35 mm) or four films size 126 or two films size 127 or one film size 220 or two films size 120.

Max. quantity: 650 ml

Dimensions: ø 100 mm (3.9 in.), height approx. 160 mm (6.3 in.)



4263
Film Washing Hose

For fast and thorough film washing. Fits 4286-87, 4296-97 Kaiser developing tanks and almost all water faucets.

Length: approx. 55 cm (22 in.)





4299 Negative Lab Set

Contains all items required for B & W developing.

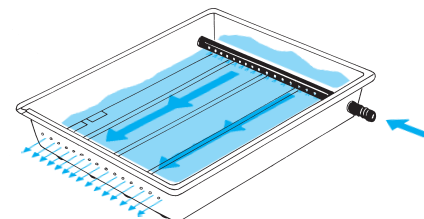
Includes: Film wiper (4070),
 Tank thermometer (4081),
 Film clips (4117),
 Chemical storage bottle 1000 ml,
 white (4192),
 Chemical storage bottle 1000 ml,
 brown (4193),
 Funnel \varnothing 120 mm (4243),
 Graduate 250 ml (4253),
 „Standard“ developing tank (4296)



4094 PE/RC Print Washer

For quick and thorough washing of plastic-coated papers. With connecting hose of 1 m (3.3 ft.) length and hose clip for attaching to water outlet.

For formats up to 30 x 40 cm (12 x 16 in.)
 Capacity: approx. 4 l
 Dimensions (WxHxD): approx. 460 x 85 x 360 mm (18.1 x 3.3 x 14.2 in.)



4048
Drying Rack

For air-drying of plastic-coated paper (PE/RC papers). For five 30 x 40 cm (12 x 16 in.) or 24 x 30 cm (9 1/2 x 12 in.) prints or ten 20 x 25 cm (8 x 10 in.) prints or more prints of smaller size.

Required space: approx. 32 x 22.5 cm
(12.6 x 8.9 in.)

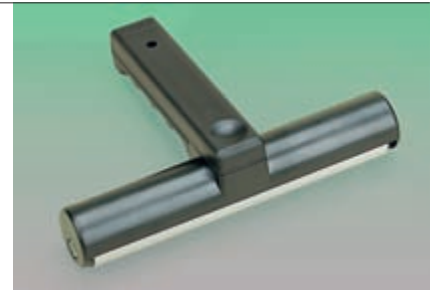
Height: approx. 25 cm (9.8 in.)



4056
Roller Squeegee

For squeezing off excess water from plastic-coated papers. Also suitable for blister-free rolling of prints on glazing pressures and for mounting photographs on particle boards etc. Handy plastic handle. Roller made of moulded PVC, 180 mm (7.1 in.) wide, ø 26 mm (1 in.).

Dimensions: approx. 190 x 50 x 140 mm
(7.5 x 2 x 5.5 in.)



4070
Film Wiper

With four-fold soft rubber blades, 70 mm (2.8 in.) wide. Completely harmless to film. For film widths up to 60 mm (2.4 in.).

Length: 160 mm (6.3 in.)



4117
Film Clips

For hanging up wet films. 3-hole clip mechanism. Plastic with stainless steel spring. 1 clip with and 1 without weight.

Dimensions: approx. 27 x 83 x 14 mm
(1.1 x 3.3 x .6 in.)



4120
Film Clips

For hanging up wet films. 2-hole clip mechanism. Stainless steel model.

1 clip with and 1 without weight.





4129
Film Loader

For loading bulk 35 mm film into cartridges in daylight. For bulk film material up to 30 m (98 ft.). With frame counter and remaining-film meter.

Dimensions: approx. 130 x 110 x 80 mm
(5.1 x 4.3 x 3.1 in.)



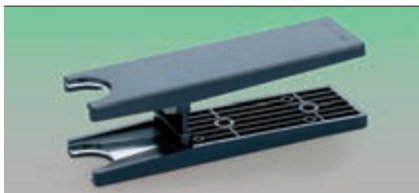
4127
Film Cartridges

For 35 mm film. For self-loading with bulk film material. Plastic type, 5 pcs.



4132
Film Leader Retriever

For extracting 35 mm film leader from cartridges into which the film has been wound. Plastic casing with one fixed and one sliding tongue. Simple use.



4125
Film Cartridge Opener

For opening 35 mm film cartridges.

Dimensions: approx. 140 x 40 x 40 mm
(5.5 x 1.6 x 1.6 in.)



6689
Antismagnetic Lab Scissors

Made of fibreglass-reinforced nylon. Blades of special heat-treated stainless steel, antismagnetic.

Length: 18 cm (7.1 in.)